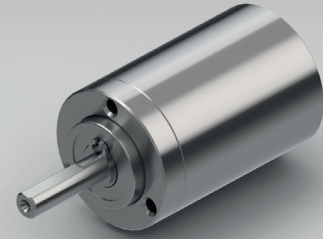


## PLANETARY GEARBOX GPL016

stainless steel version



		1-STAGE	2-STAGE	3-STAGE	
Ratio i:1	Max. motor shaft - ØD	Ratio i:1	Max. motor shaft - ØD	Ratio i:1	
				36	5
				48	5
				64	3
3	5	16	3	Ratio i:1	
				84	5
				112	3
4	3	21	5	Ratio i:1	
				147	5
7	1	28	3	Ratio i:1	
				196	3
				343	1
Max. rated torque continuous		Nm		0.1      0.3      0.5	
Max. efficiency at max. rated torque continuous		%		90      85      80	
Average backlash at no load		arcmin ≤		20      35      50	
Weight without adapter plate		g		20      25      30	
Dimension L		mm		18.5      23.5      28.5	
Dimension A		mm		3	
Dimension B		mm		7.2	
Max. radial load	F <sub>R</sub>	5 mm from shaft end		N	
Max. axial load	F <sub>A</sub>			N	
Max. continuous rated speed at drive					min <sup>-1</sup>
Max. intermittent rated speed at drive					min <sup>-1</sup>
Temperature range	Type Standard			°C	
Temperature range	Type V			°C	

**Standard scope of delivery** Gearbox lubricated for duration of service life, dust-proof package, motor pinion and assembly instructions (adapter plate optional).

Customized versions also available for small quantities.

Type V = heavy duty version

Changes reserved © GYSIN AG | 10/2014