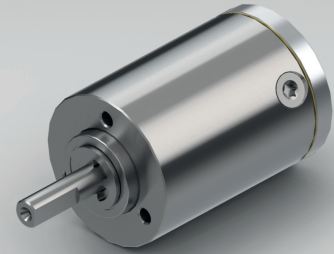


Standard scope of delivery Gearbox lubricated for duration of service life, dust-proof package, motor pinion, mounting screws, paper gasket and assembly instructions (adapter plate optional).
Customized versions also available for small quantities.

PLANETARY GEARBOX GPL022

stainless steel version



	1-STAGE	2-STAGE	3-STAGE			
Ratio i:1	Max. motor shaft- $\varnothing D$	Ratio i:1	Max. motor shaft- $\varnothing D$	Ratio i:1	Max. motor shaft- $\varnothing D$	
				64	4	
				80	4	
				112	4	
20	4	140	4			
4	4	28	4	196	4	
5	3	35	3	245	3	
7	1.5	49	1.5	343	1.5	
Rated torque continuous	Type Standard	Type R	Nm	0.1	0.5	1.5
Rated torque intermittent	Type Standard	Type R	Nm	0.2	1	3
Rated torque continuous	Type V		Nm	0.2	1	1.5
Rated torque intermittent	Type V		Nm	0.4	1.5	3
Max. efficiency at rated torque			%	90	85	80
Average backlash at no load	Type Standard	Type V	arcmin \leq	20	35	50
Average backlash at no load	Type R		arcmin \leq	10	20	30
Weight without adapter plate			g	50	75	100
Dimension L			mm	21	28	35
Dimension A			mm		4.25	
Dimension B			mm		12.5	
Max. radial load	F _R	6 mm from shaft end	N		30	
Max. axial load	F _A		N		24	
Max. continuous rated speed at drive			min ⁻¹		6000	
Max. intermittent rated speed at drive			min ⁻¹		10000	
Temperature range	Type Standard	Type R	°C		-30 / +90	
Temperature range	Type V		°C		-40 / +90	

Type V = heavy duty version | Type R = reduced backlash version

Changes reserved © GYSIN AG | 10/2014