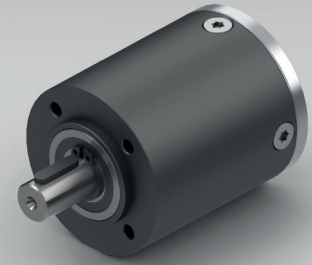


## PLANETARY GEARBOX GPL052



		1-STAGE	2-STAGE	3-STAGE	
<b>Ratio i:1</b>	<b>Max. motor shaft-ØD</b>	<b>Ratio i:1</b>	<b>Max. motor shaft-ØD</b>	<b>Ratio i:1</b>	<b>Max. motor shaft-ØD</b>
				64	10
				72	10
		12.08	10	100	10
		16	10	130	10
		18	10	144	10
		20.8	10	175.78	9
		25	10	200	10
		29	10	225	9
		4	10	32	10
4.5	9	36	9	288	9
5.2	7	41.6	7	332.8	7
6.25	6	50	6	400	6
8	4	64	4	512	4

**Standard scope of delivery** Gearbox lubricated for duration of service life, dust-proof package, motor pinion, mounting screws, paper gasket and assembly instructions (adapter plate optional).

Customized versions also available for small quantities.

Stainless steel version on request.

Rated torque continuous	Type Standard	Type R	Nm	1.5	10	30
Rated torque intermittent	Type Standard	Type R	Nm	3	20	60
Rated torque continuous	Type V	Type S	Nm	3	15	30
Rated torque intermittent	Type V	Type S	Nm	6	30	60
Max. efficiency at rated torque			%	90	85	80
Average backlash at no load	Type Standard	Type V	arcmin ≤	20	35	50
Average backlash at no load	Type R		arcmin ≤	10	20	30
Average backlash at no load	Type S		arcmin ≤	6	12	15
Weight without adapter plate			g	475	600	725
Dimension L			mm	41	55.5	70
Dimension A			mm		8.5	
Dimension B			mm		23.5	
Max. radial load	FR	10 mm from shaft end	N		250	
Max. axial load	FA		N		200	
Max. continuous rated speed at drive			min <sup>-1</sup>		5000	
Max. intermittent rated speed at drive			min <sup>-1</sup>		8000	
Temperature range			°C		-25 / +90	

Type V = heavy duty version | Type R = reduced backlash version | Type S = low backlash version

Changes reserved © GYSIN AG | 10/2014