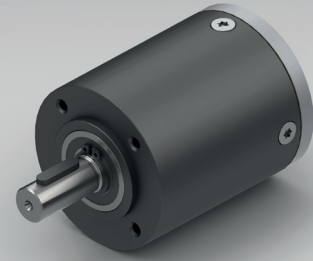


PLANETARY GEARBOX GPL065



| | | 1-STAGE | 2-STAGE | 3-STAGE | |
|-----------|---------------------|-----------|---------------------|---------|----|
| Ratio i:1 | Max. motor shaft-ØD | Ratio i:1 | Max. motor shaft-ØD | 49 | 12 |
| | | | | 56 | 12 |
| | | 12.25 | 14 | 64 | 12 |
| | | 14 | 12 | 70 | 12 |
| | | 16 | 12 | 80 | 12 |
| | | 20 | 12 | 100 | 12 |
| | | 24 | 12 | 120 | 12 |
| | | 25 | 9 | 144 | 12 |
| 3.5 | 14 | 30 | 9 | 184 | 12 |
| 4 | 12 | 30.67 | 12 | 235.11 | 12 |
| 5 | 9 | 38.33 | 9 | 293.89 | 9 |
| 6 | 6 | 46 | 6 | 352.67 | 6 |
| 7.67 | 5 | 58.78 | 5 | 450.63 | 5 |

Standard scope of delivery Gearbox lubricated for duration of service life, dust-proof package, motor pinion, mounting screws, paper gasket and assembly instructions (adapter plate optional).
Customized versions also available for small quantities.

| | | | | | | |
|--|----------------|----------------------|-------------------|-----------|------|------|
| Rated torque continuous | Type Standard | Type R | Nm | 3 | 15 | 38 |
| Rated torque intermittent | Type Standard | Type R | Nm | 6 | 30 | 75 |
| Rated torque continuous | Type V | Type S | Nm | 6 | 30 | 38 |
| Rated torque intermittent | Type V | Type S | Nm | 12 | 38 | 75 |
| Max. efficiency at rated torque | | | % | 90 | 85 | 80 |
| Average backlash at no load | Type Standard | Type V | arcmin ≤ | 20 | 35 | 50 |
| Average backlash at no load | Type R | | arcmin ≤ | 10 | 20 | 30 |
| Average backlash at no load | Type S | | arcmin ≤ | 6 | 12 | 15 |
| Weight without adapter plate | | | g | 1000 | 1400 | 1750 |
| Dimension L | | | mm | 53.5 | 71.5 | 89.5 |
| Dimension L1 | | | mm | 32 | 30 | |
| Dimension A | | | mm | 13 | 11 | |
| Dimension B | | | mm | 34 | 32 | |
| Max. radial load | F _R | 15 mm from shaft end | N | 400 | | |
| Max. axial load | F _A | | N | 320 | | |
| Max. continuous rated speed at drive | | | min ⁻¹ | 4000 | | |
| Max. intermittent rated speed at drive | | | min ⁻¹ | 6000 | | |
| Temperature range | | | °C | -25 / +90 | | |

Type V = heavy duty version | Type R = reduced backlash version | Type S = low backlash version

Changes reserved © GYSIN AG | 10/2014