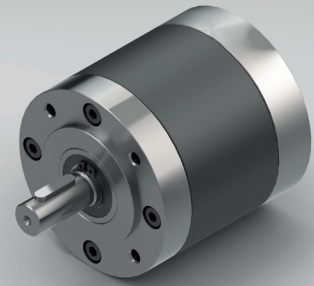


Standard scope of delivery Gearbox lubricated for duration of service life, dust-proof package, motor pinion, mounting screws, paper gasket and assembly instructions (adapter plate optional).
Customized versions also available for small quantities.

PLANETARY GEARBOX GPL080



		1-STAGE	2-STAGE	3-STAGE	
Ratio i:1	Max. motor shaft- $\varnothing D$	Ratio i:1		Max. motor shaft- $\varnothing D$	
		Ratio i:1	Max. motor shaft- $\varnothing D$	Ratio i:1	Max. motor shaft- $\varnothing D$
				49	12
				56	12
	12.25	14	64	12	12
	14	12	70	12	12
	16	12	80	12	12
	20	12	100	12	12
	24	12	120	12	12
	25	9	144	12	12
3.5	14	30	9	184	12
4	12	30.67	12	235.11	12
5	9	38.33	9	293.89	9
6	6	46	6	352.67	6
7.67	5	58.78	5	450.63	5

Rated torque continuous	Type Standard	Type R	Nm	3	15	38
Rated torque intermittent	Type Standard	Type R	Nm	6	30	75
Rated torque continuous	Type V	Type S	Nm	6	30	38
Rated torque intermittent	Type V	Type S	Nm	12	38	75
Max. efficiency at rated torque			%	90	85	80
Average backlash at no load	Type Standard	Type V	arcmin \leq	20	35	50
Average backlash at no load	Type R		arcmin \leq	10	20	30
Average backlash at no load	Type S		arcmin \leq	6	12	15
Weight without adapter plate			g	1500	2100	2750
Dimension L			mm	43.5	61.5	79.5
Dimension L1			mm	32	30	
Dimension A			mm	13	11	
Dimension B			mm	34	32	
Max. radial load	F_R	15 mm from shaft end	N	400		
Max. axial load	F_A		N	320		
Max. continuous rated speed at drive			min ⁻¹	4000		
Max. intermittent rated speed at drive			min ⁻¹	6000		
Temperature range			°C	-25 / +90		

Type V = heavy duty version | Type R = reduced backlash version | Type S = low backlash version

Changes reserved © GYSIN AG | 10/2014